



Mount Prospect
School District 57

Planning for the 2021- 22 School Year

Overview of Current ISBE/IDPH Guidance

5. Must school districts continue to offer a remote education options to students? (3/9/21)

Students who are at increased risk of severe illness, who have special health care needs, or who live with people at increased risk must be given the option of remote instruction. Students who are not at increased risk of severe illness, who do not have special health care needs, or who don't live with people at increased risk may be given the option of remote instruction. If a district chooses to discontinue remote education for students who are not at increased risk of severe illness, who do not have special health care needs, or who don't live with people at increased risk, the district must provide sufficient time and support for families to make plans for in-person instruction, including ensuring that students transferring to in-person instruction from remote education have had an opportunity to obtain required health examinations and immunizations if not already compliant.

Consistent with the updated guidance from the CDC, **families of students who are at increased risk of severe illness (including those with special health care needs) or who live with people at increased risk** must be given the option of remote instruction.

Revised Public Health Guidance for Schools

PART 4 – TRANSITION JOINT GUIDANCE
MARCH 2021



Illinois
State Board of Education

IDPH

Overview of ESSER Funds for D57

ESSER II (CRRSA Act)	ARP ESSER (ARP Act)
<ul style="list-style-type: none">• ESSER II funds may be used for the same allowable purposes as ESSER and ARP ESSER, including hiring new staff and avoiding layoffs.• Note that the “additional” LEA allowable uses of funds under the CRRSA Act (addressing learning loss, preparing schools for reopening, and testing, repairing, and upgrading projects to improve air quality in school buildings) already are permitted under the CARES Act.• No required reservations of funds.	<ul style="list-style-type: none">• An LEA must reserve not less than 20 percent of its total ARP ESSER allocation to address learning loss through the implementation of evidence-based interventions, such as summer learning or summer enrichment, extended day, comprehensive afterschool programs, or extended school year programs, and ensure that such interventions respond to students’ academic, social, and emotional needs and address the disproportionate impact of COVID-19 on underrepresented student subgroups.• The remaining ARP ESSER funds may be used for the same allowable purposes as ESSER and ESSER II, including hiring new staff and avoiding layoffs.

D57 Allocation	Anticipated D57 Allocation
\$333,163	\$759,098



**Remote Survey
Results**

Remote Survey Results

- X All families of current remote students were surveyed
 - X Excludes incoming kindergarteners new to D57
 - X Excludes graduating 8th Graders
 - X Excludes any students leaving D57

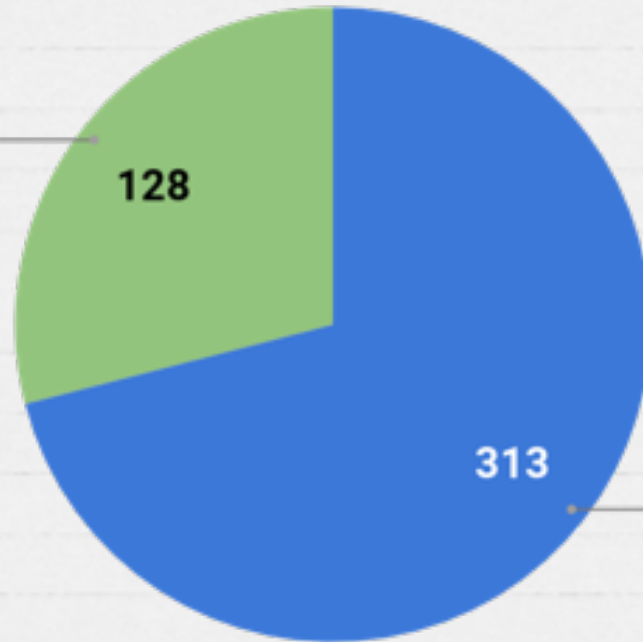
- X 90% response rate



2021-2022 Learning Model Preference

N=441

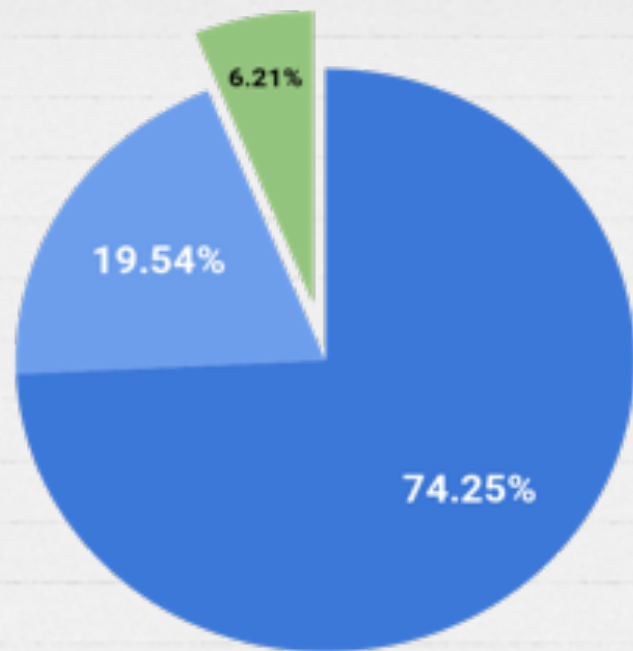
Remote
29.0%



In-Person
71.0%

Returning Student Learning Model Preference

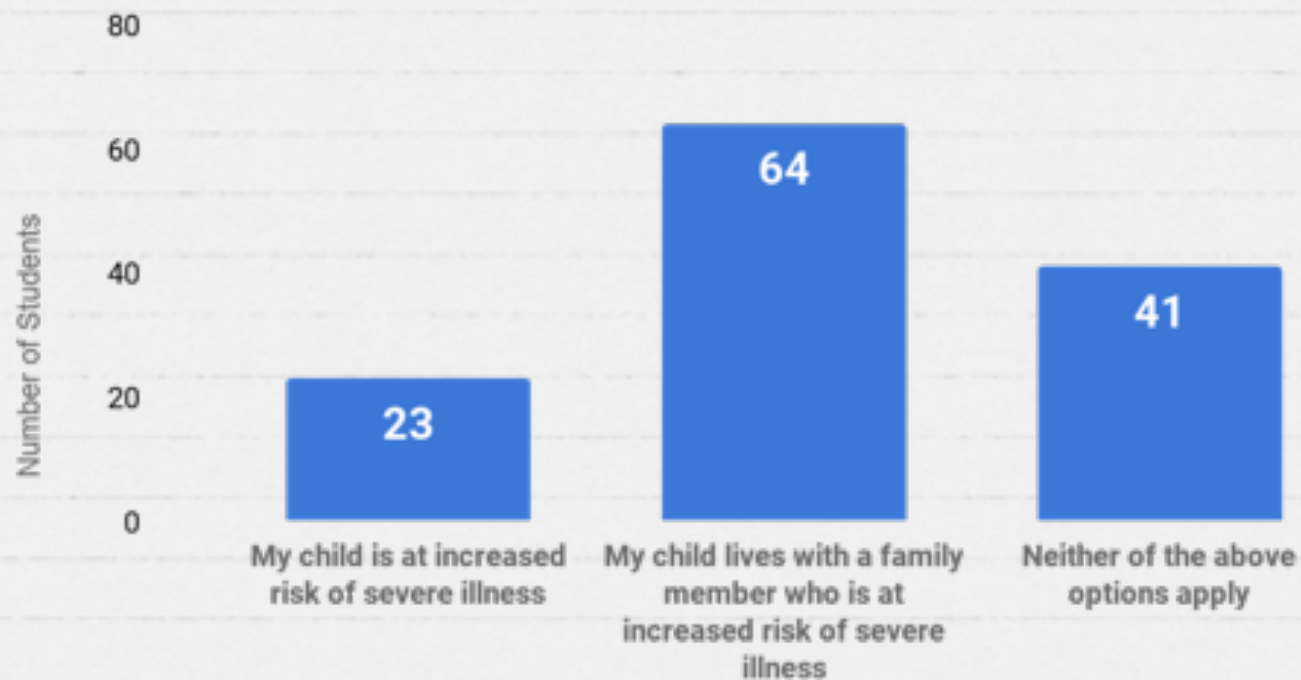
N=2062



● In-Person ● In-Person 21-22 ● Remote 21-22

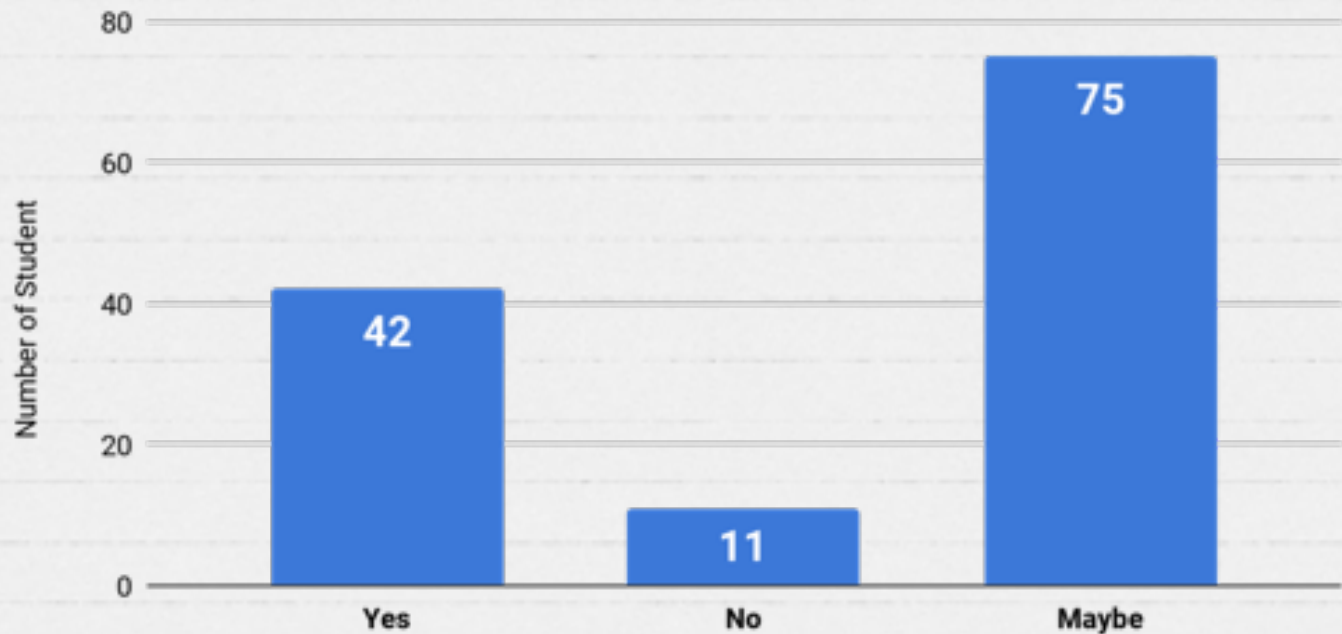
Reason for Remote Preference

N=128



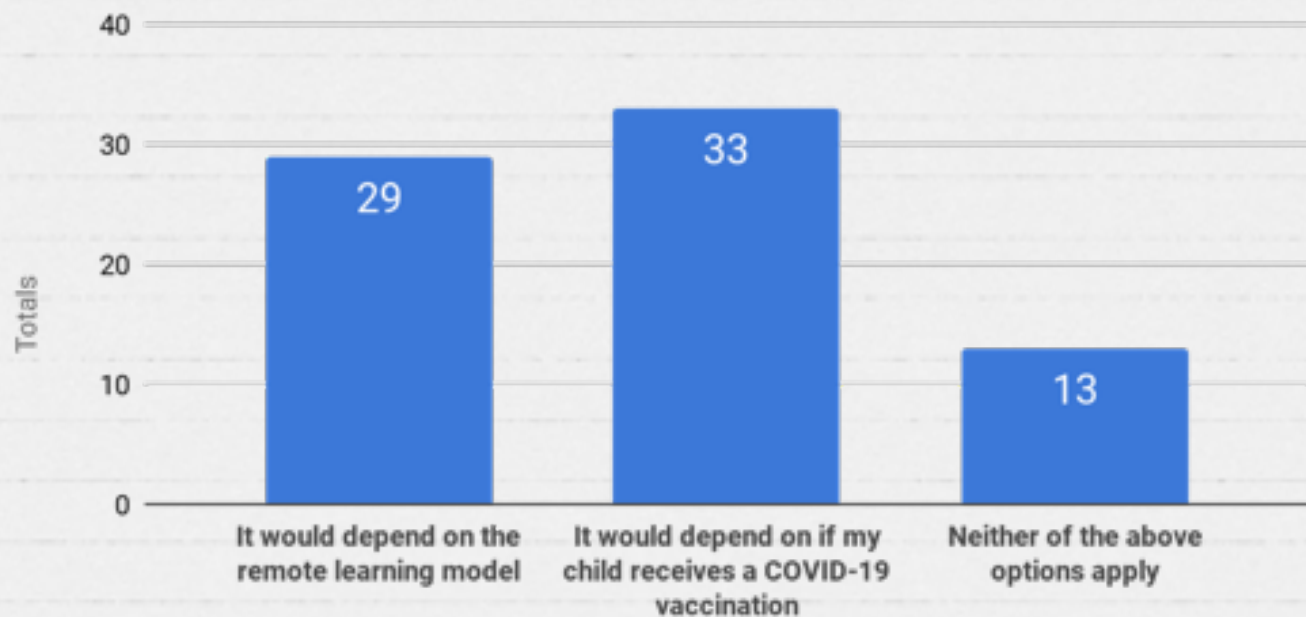
Full Year Commitment

N=128



Main Reason For Selecting MAYBE

N=75



Lessons Learned from 20-21 School Year

- x Importance of **consistency in teacher assignment** throughout the school year
- x The utility of a model that offers **adaptability for changing needs and preferences of families and COVID-19 landscape**
- x The **challenges associated with our current livestreaming model**



Model 3 Blended Approach: Offering Remote Classes based on Enrollment

Model 3 Description

- X Remote sections will be offered when enrollment numbers are high enough to designate an existing D57 teacher
- X If enrollment is not high enough, concurrent learning model will be implemented
- X **1-Year Program Commitment Required**

Benefits:

-Model provides two viable options for families who desire a remote learning choice for 21-22 school year

Challenges:

-Full year commitment is restrictive and prevents adaptability for changing needs/preferences
-Possible inequities across grade levels depending on parents' enrollment choices

Estimated Costs:

3-5 Instructional Assistants (for concurrent classes)
\$95,000-\$190,000

Tech equipment for 3-5 rooms
\$10,500- \$17,500
-\$3500 per room
- Interactive Flat Screen/Cart
- Web Camera
- Chromebox on Cart

Timeline

Tonight -April 29

Board of Education Approves Remote Learning Plan for 2021-22 School Year

Monday, May 3

Registration for 2021-22 School Year Opens

Wednesday, May 5

Optional Informational Zoom Session for D57 Families interested in more information on the Remote Learning Model for 2021-22 School Year

May 7-May 13

Families given opportunity to enroll in remote learning model for 2021-22 School Year

Friday, May 21

Sectioning Day for 2021-22 School Year

